



Building Plot at the  
Garage, The Park, Whithorn  
DG8 8PL



# Building Plot, former Garage, The Park, Whithorn DG8 8PL



2



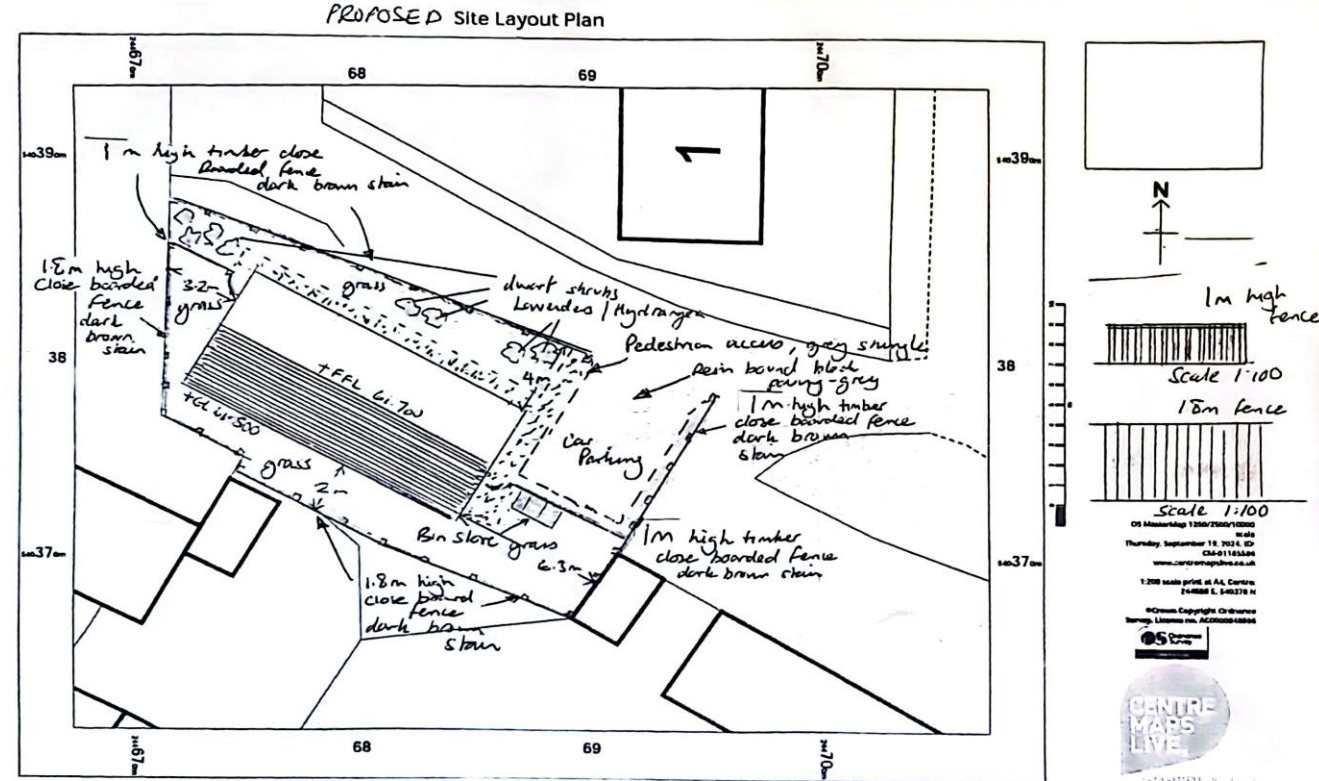
2



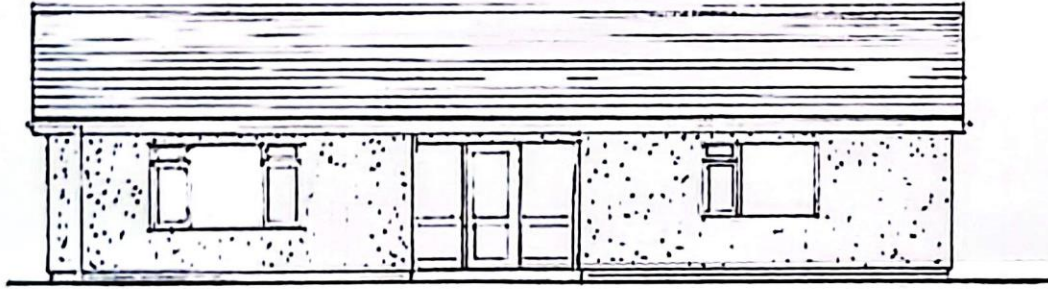
1

## Key Features:

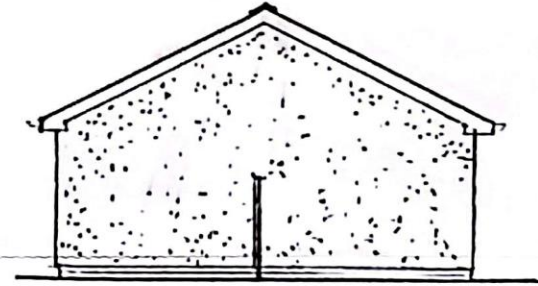
- . Building plot with conditional planning permission
- . Approximate size of site 250 sq.m
- . 2 Bed detached bungalow
- . Conveniently located for local amenities, school etc
- . Full Double glazing
- . Off road parking
- . Enclosed garden to rear



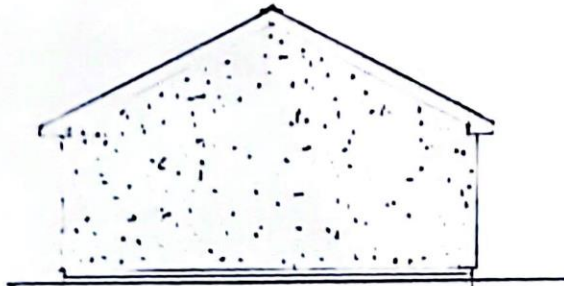
THE PARK  
CASTLEHILL  
WITHORN



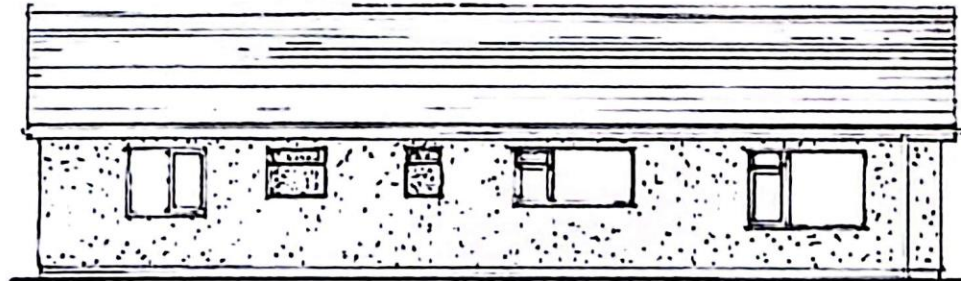
NORTH ELEVATION



WEST ELEVATION



EAST ELEVATION



SOUTH ELEVATION

1:100

### NOTES

Planning details available from Dumfries & Galloway Council, application dated 14 October 2024, reference 24/2132/FUL, **granted Planning Permission**

### SERVICES

Mains electricity, water & drainage available subject to authorised connection

### PRICE

Offers in region of £37,500

### VIEWING ARRANGEMENTS

Through the selling agents, Galloway & Ayrshire Properties at their Newton Stewart office. 01671 402104

### OFFERS

Notes of interest should be registered with the selling agents in case a Closing date is fixed. All offers, in the usual Scottish form should be lodged with the selling agents.



THE PARK  
CASTLEHILL  
WITHORN

